

Heavy-duty cutter 842



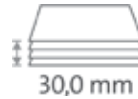
- High-quality guillotines for commercial use
- Solid metal table as a sturdy cutting base
- Sturdy handle for effortless cutting performance
- Screw-mounted, ground upper blade for cutting power
- High-quality, re-sharpenable blade made of Solingen steel for long-lasting cutting quality
- Sturdy metal blade cover guards for reassuring safety while cutting
- Convenient quick-action clamp for swift results
- Accurately fitting scale bar with mm scale for an exact 90° cut
- Adjustable metal backstop for quickly finding the right format
- Easy-to-change cutting edge can be used for 8 different cutting needs
- Minimum cut 35 mm
- Practical stand with storage shelf with an optimum working height of 74 cm is optionally available (712)
- Blades can be sharpened
- Lower frame optionally available
- 1 scale bar



Commercial use:
always ready for top performance.



Cutting length 430 mm



Cutting capacity 30.0 mm



Cutting capacity 300 sheets



Table size (overall dimensions) 720 x 590 mm



Carries the GS DGVV (German Statutory Accident Insurance Association) test mark



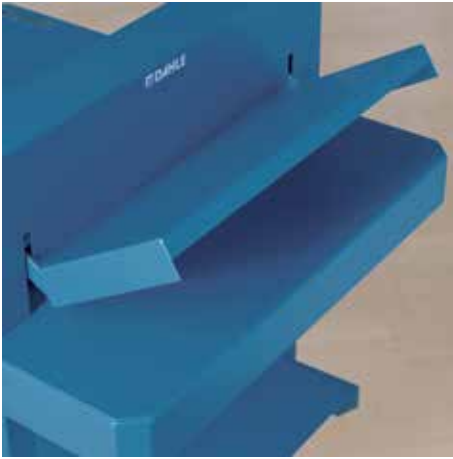
Extended 5-year guarantee (except wearing parts)



German Engineering by Dahle

Article number	Cutting length in mm	DIN	Cutting capacity in mm	Cutting capacity A4 80 g/sm*	Table size, external dimensions, in mm	Off-cut side area, mm	Cutting side area, mm	Colours	EAN
00842-01090	430	A3	30	300	720 mm x 590 mm	430 x 430	215		4007885008424

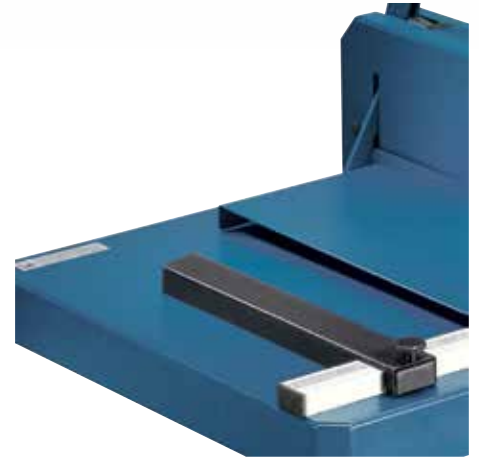
Heavy-duty cutter 842



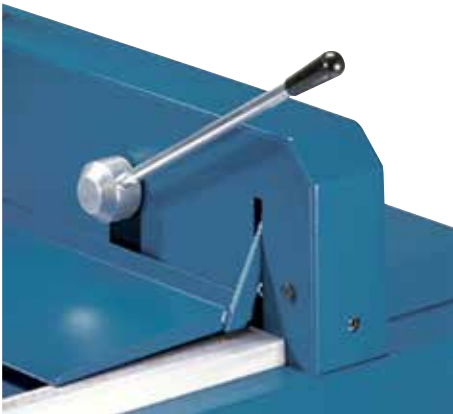
Sturdy blade cover guards in metal on heavy-duty cutter 842 cover the entire work area while cutting



Heavy-duty guillotine 842 also available as desk-top model



Adjustable metal backstop for quickly finding the right format



Convenient quick-action clamp for swift results

For yderligere oplysninger besøg
www.dahle.dk / www.cabi.dk
eller ring 30506210